

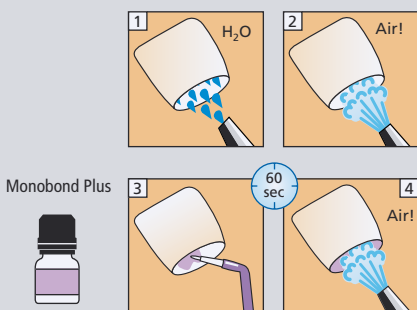
Multilink® Automix

Placement of zirconia, metal, metal-ceramic and indirect composite restorations (Inlays, onlays, crowns, bridges, posts)

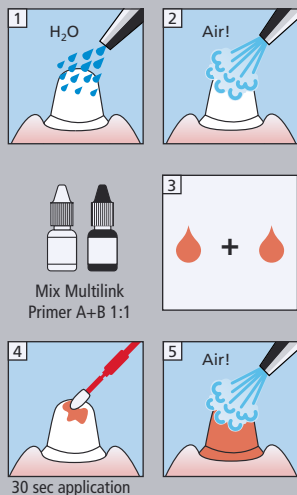
Restoration

Pre-treatment of metal, metal-ceramic and zirconia restorations:
According to manufacturer's instructions.
E.g. IPS e.max ZirCAD: Blast with Al₂O₃ 100 µm, 1 bar

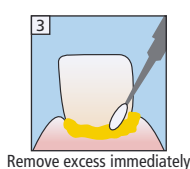
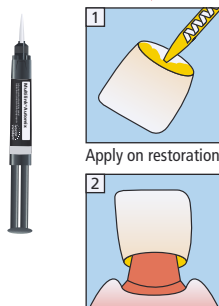
Pre-treatment of composite restorations:
According to manufacturer's instructions.
E.g. SR Nexco: Blast with Al₂O₃ 100 µm, 1 bar



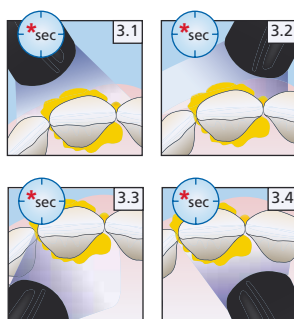
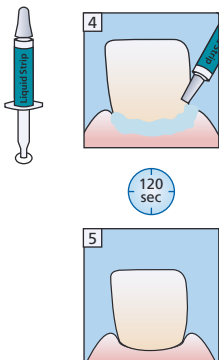
Dentin/Enamel



Multilink Automix



Liquid Strip



* Light intensity	Exposure time per quarter segment	
Indicated for cases with up to 2 bridge abutments = 3 to 4-unit bridges		
approx. 650 mW/cm ²	3 sec	e.g. Bluephase in LOW POWER mode
approx. 1.000 mW/cm ²	1-2 sec	e.g. Bluephase Style or Bluephase in HIGH POWER mode
Indicated for cases with up to 6 bridge abutments = circular bridges		
approx. 650 mW/cm ²	1 sec	e.g. Bluephase in LOW POWER mode

