

MAKE IT YOUR!
STYLE YOUR!

NEW

IPS Style®

The first patented metal-ceramic
containing oxyapatite

MAKE IT YOUR!
STYLE YOUR!

Further information at
www.ivoclarvivadent.com/style



PERFECT HARMONY.

IPS Style®

IPS e.max® Ceram



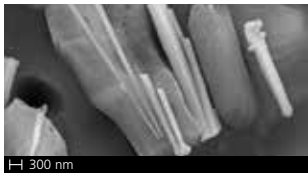
for metal-ceramic
restorations



for all-ceramic
restorations

IPS Style[®]

The first patented metal-ceramic containing oxyapatite



Needle-shaped oxyapatite

New
crystal structure:

The handling and optical properties
are unique.

4

*reasons,
why IPS e.max[®]
and IPS Style[®] are so
well suited*

- Coordinated shade scheme
- Intuitive modelling properties
- Identical gingiva design
- Identical stains and glazes

1


Coordinated
shade scheme

A combination of IPS Style and
IPS e.max creates an overall
harmonious appearance in the
patient's mouth.



2

Intuitive modelling properties



IPS e.max Ceram and IPS Style layering materials remain stable during application and have good firing characteristics.


3

Identical gingiva design

Identical shades and product designations with IPS e.max and IPS Style for a lifelike creation of the prosthetic gingiva (Gingiva Solution).

4

Identical stains and glazes



IPS Ivocolor can be used for the individualization of all* layering, press and CAD ceramics from Ivoclar Vivadent.

*with the exception of non-crystallized
IPS e.max CAD and CAD-on restorations