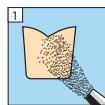


Tetric® CAD

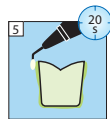
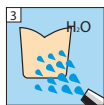
Prétraitement et assemblage des restaurations Tetric® CAD |

1. Prétraitement de la restauration |

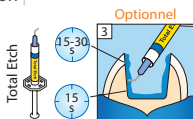
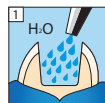


2. Nettoyage de la restauration dans un bain à ultrasons à l'éthanol.

Al₂O₃ 50 µm,
1-1,5 bar

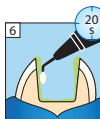
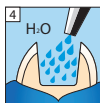


2. Prétraitement de la préparation |

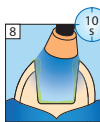


Total Etch

15-30 s
15 s



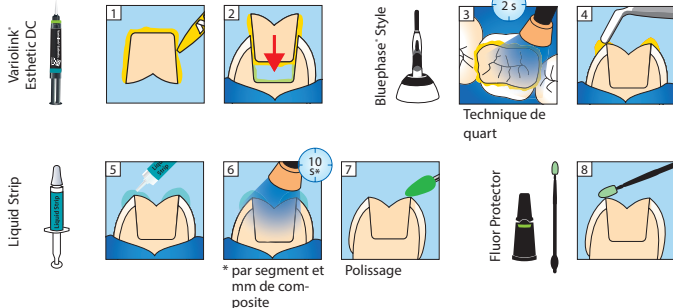
Éviter les surépaisseurs



Tetric[®] CAD

Prétraitement et assemblage des restaurations Tetric[®] CAD |

3. Assemblage |



plus d'informations
www.cementation-navigation.com

CE 0123



voir
mode d'emploi



Fabricant :
Ivoclar Vivadent AG, 9494 Schaan/Liechtenstein
www.ivoclarvivadent.com

Date d'édition : 2017-08-24, Rev.0
692816

ivoclar
vivadent
passion vision innovation