




3D-Master* shades by infiltration

Combination chart

3D-Master shades are created by infiltrating IPS e.max ZirCAD Prime with the IPS e.max ZirCAD Colouring Liquids (diluted with IPS e.max ZirCAD Colouring Liquid Diluter, as necessary). Please see the combination chart below for guidance on the appropriate combination of materials.

Desired shade in 3D-Master* quality	IPS e.max ZirCAD Prime	IPS e.max ZirCAD LT Colouring Liquid	Mixing ratio for infiltration solutions	IPS e.max ZirCAD Colouring Liquid Indicator
			 10 drops of infiltration mixture are required per unit LT Colouring Liquid : Colouring Liquid Diluter (by number of drops)	
OM1	BL2	No infiltration necessary	–	 + 1  IPS e.max ZirCAD Colouring Liquid Indicator independent of the amount of infiltration mixture prepared
OM2	BL2	B1	1 : 19**	
OM3	BL2	A1	3 : 7	
1M1	BL2	A1	10 : 0	
1M2	A1	No infiltration necessary	–	
2M1	BL3	B1	7 : 3	
2L1.5	BL2	B2	8 : 2	
2R1.5	BL3	A1	8 : 2	
2M2	B1	B2	5 : 5	
2L2.5	BL1	orange	10 : 0	
2R2.5	A2	B2	3 : 7	
2M3	A1	B3	5 : 5	
3M1	BL3	A1	7 : 3	
3L1.5	BL3	C2	10 : 0	
3R1.5	BL3	D2	10 : 0	
3M2	BL3	B2	10 : 0	
3L2.5	B2	B2	5 : 5	
3R2.5	B2	B3	1 : 9	
3M3	B3	B4	1 : 9	
4M1	A3	grey	10 : 0	
4L1.5	A3.5	grey	5 : 5	
4R1.5	D3	No infiltration necessary	–	
4M2	A4	B3	2 : 8	
4L2.5	A4	B3	5 : 5	
4R2.5	A4	A4	2 : 8	
4M3	B4	A3.5	4 : 6	
5M1	A4	Grey	10 : 0	
5M2	A4	A4	4 : 6	
5M3	B4	A4	8 : 2	

* 3D-Master is not a registered trademark of Ivoclar Vivadent

** to achieve the dilution, the minimum quantity of the infiltration mixture for this shade is 20 drops.



Would you like to prepare a large batch of infiltration mixture and then use it little by little in smaller quantities? You can do that by mixing IPS e.max ZirCAD Colouring Liquid and IPS e.max ZirCAD Colouring Liquid Diluter to obtain a large quantity. Then add IPS e.max ZirCAD Colouring Liquid Indicator to a small amount of infiltration mixture as required just before you are using it, as the stained mixture is not stable when stored.

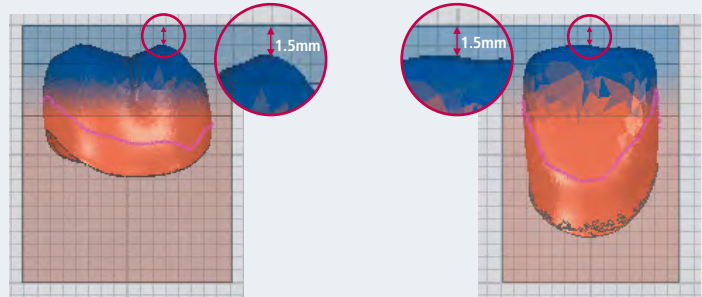
3D-Master* shades by infiltration

Step-by-step: Brush infiltration of full contour restorations

1

Positioning the restoration on the IPS e.max ZirCAD Prime disc (CAM software)

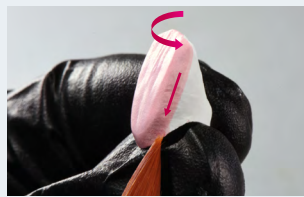
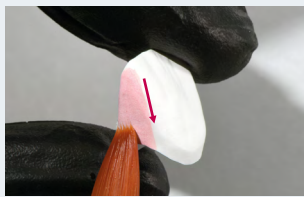
Position the restoration **1.5 mm below the upper edge of the disc** for milling.



2

Infiltrating the restoration

- Mix the infiltration liquid according to the **combination chart**.
- Thoroughly wet a **brush No. 5**. Repeat between the applications as required.
- Start with the **proximal surface**.
- Apply the infiltration mixture to the entire restoration stroke by stroke – applying **each** stroke from the incisal to the basal. The strokes must not overlap.
- **Do not apply additional infiltration mixture**. A single coat is enough to achieve the target shade.

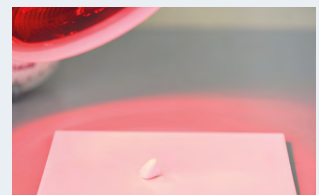


3

Drying

Adjust the length of the drying period to suit the size of the restoration.

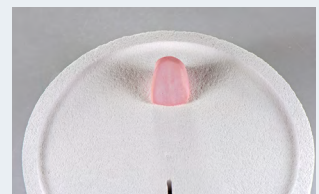
	Temperatur 70°C/158°F	Temperatur up to 140°C/284°F
Single-tooth restorations	≥ 15 min	5–10 min
Restorations with 2–4 units	≥ 40 min	≥ 25 min
Restorations with 5 or more units	≥ 50 min	≥ 25 min



4

Sintering

Sinter the restorations using a suitable sintering program for infiltrated dried restorations.



For additional information, please refer to the IPS e.max ZirCAD labside Instructions for Use.